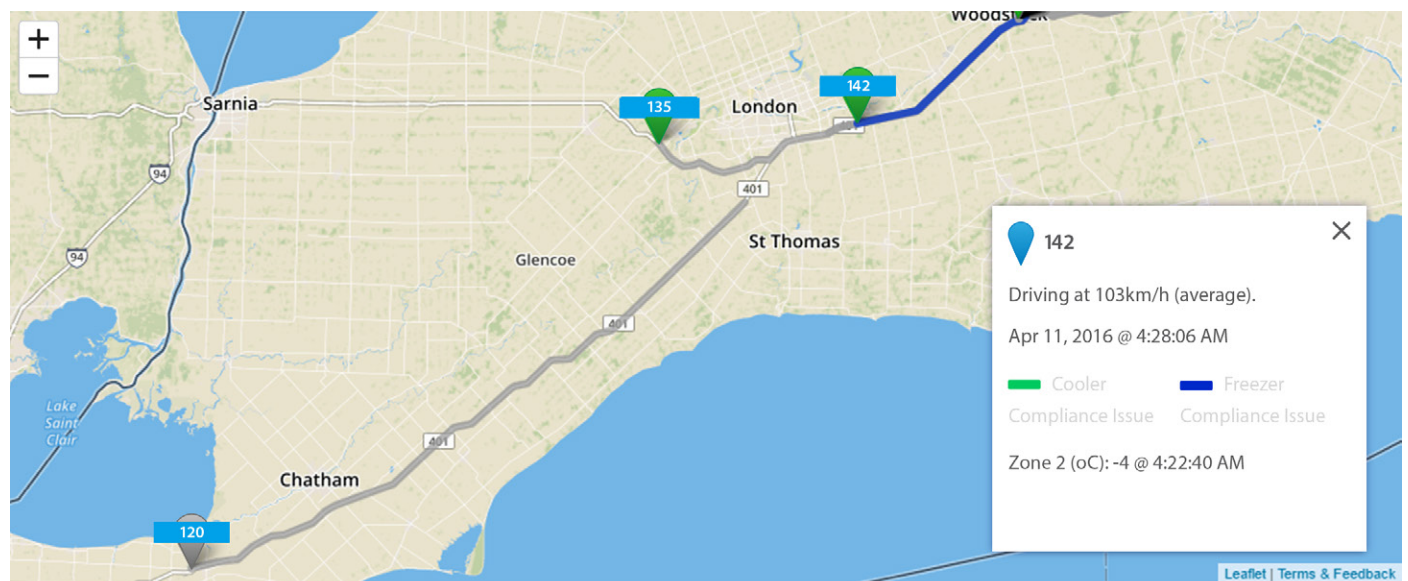


TEMPTRAC - Maps BI Add-In Code

HOW TO SETUP THE SOFTWARE:

1. Setup 2 rules in MyGeotab. Call the first rule "Cooler Compliance Issues" and call the second rule "Freezer Compliance Issues".
Please Note: You will have to assign the correct vehicles, temperatures, and status bits for each of these rules. The rules must be named exactly as shown above. The composition of these rules can change at any time, **but the name of the rule must not change.**
2. Install the *Geotab Maps BI Add-In* for Valor in MyGeotab by going to Administration > System > System Settings > Add-Ins
3. Ensure that "Unsigned Add-ins" is turned on.
4. Click "New Add-in".
5. Paste your Add-In code (*found on the following page*).
6. Click OK and then click save.
7. Click Save.
8. Refresh your browser and you should see the *Maps BI* icon appear in the menu on the left.
9. Click on the *Maps BI* Icon and you be brought to a page with your *Valor Temperature Tracking Dashboard* (see image below).
10. Click on the dashboard and you'll be brought to a real-time view tracking your vehicles temperatures.

Valor Temperature Tracking Dashboard:



Legend

|| >> x4 4:28:06 AM Apr 11, 2016 Use real-time feeds

TEMPTRAC MAPS BI ADD-IN CODE

Please use the following Maps BI Add-In Code during **Step 5** on the previous page:

```
{
  "name": "Temptrac Dashboard",
  "supportEmail": "bi@geotab.com",
  "signature": "12345-MapsBIDev",
  "key": "12345-MapsBIDev",
  "version": "1.0",
  "items": [
    {
      "icon": "https://mapsbi.com/content/images/Maps-BI-small-logo.png",
      "path": "ActivityLink/",
      "menuName": {
        "fr": "Temptrac tableau de bord en temps réel",
        "en": "Temptrac Real-time Dashboard"
      },
      "url": "https://mapsbi.com/Geotab/Realtime/index.html"
    }
  ],
  "isSigned": false
}
```